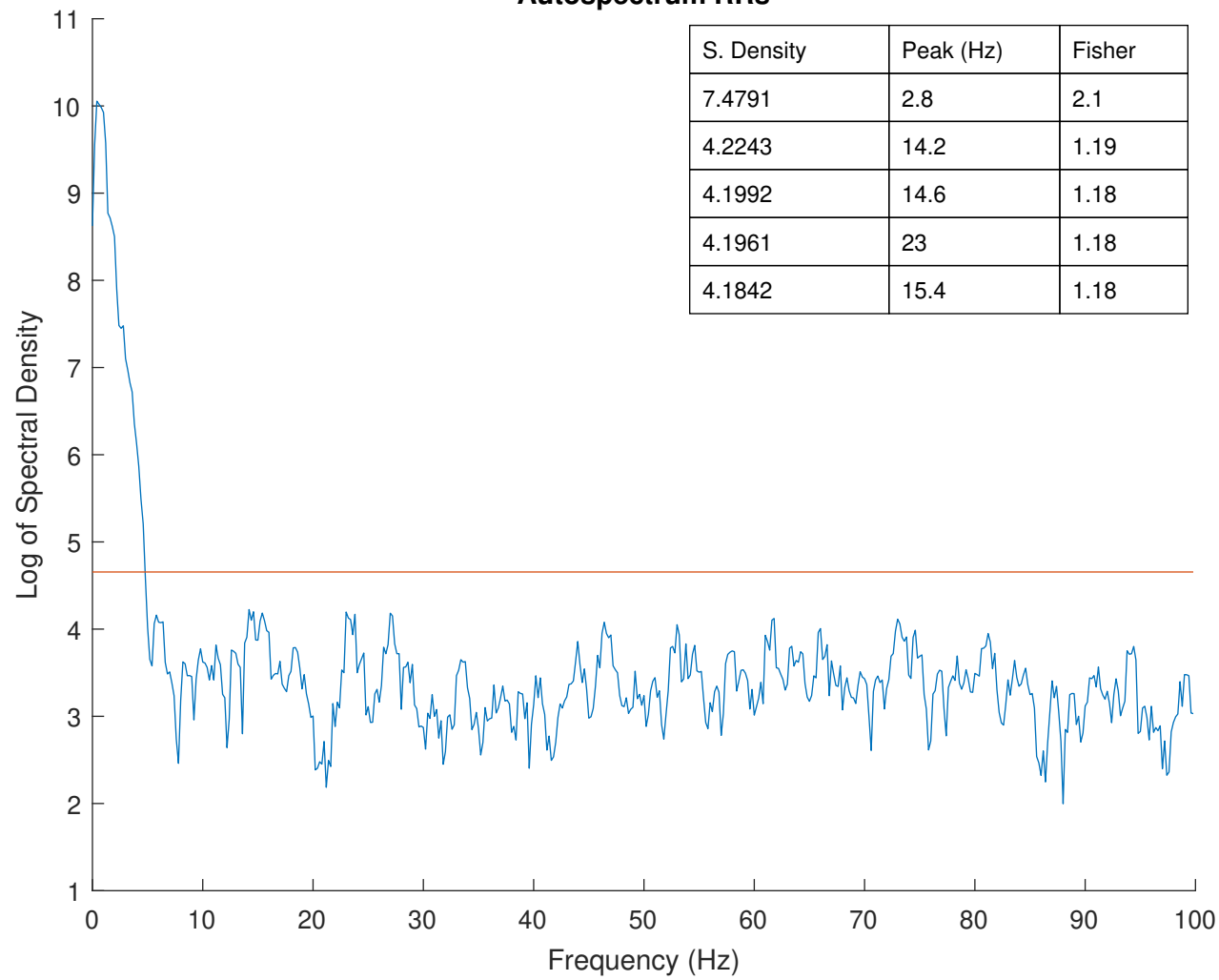
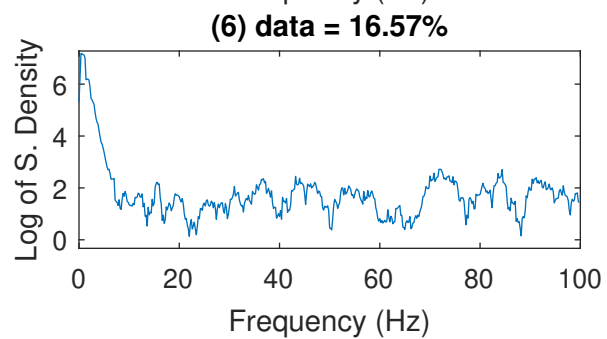
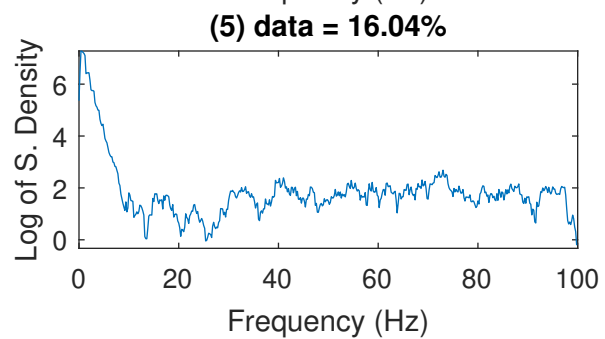
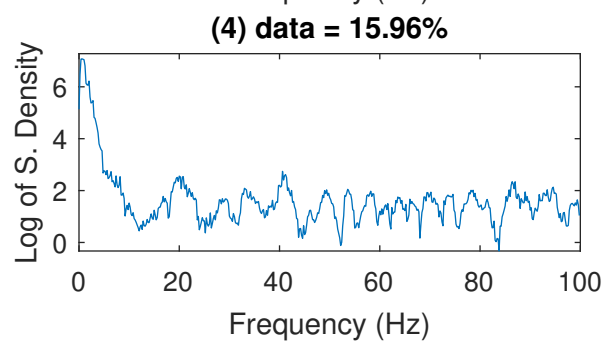
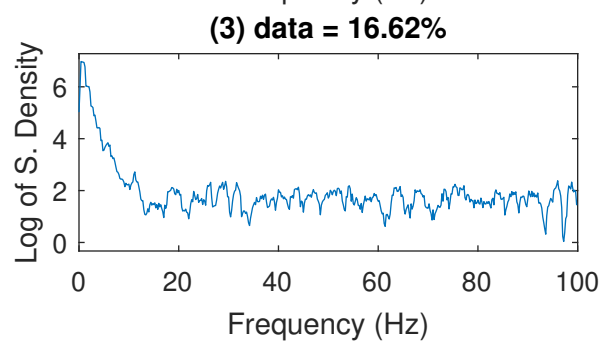
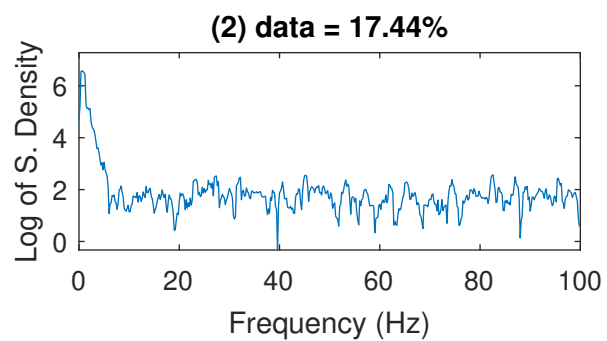
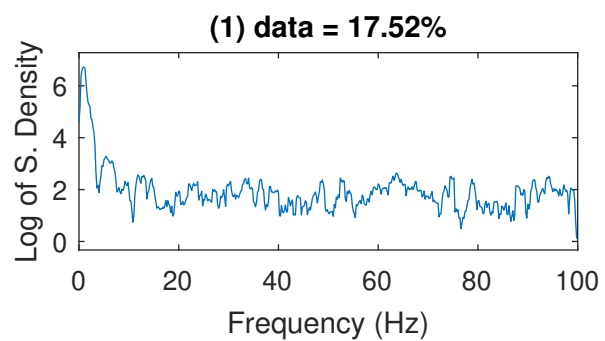
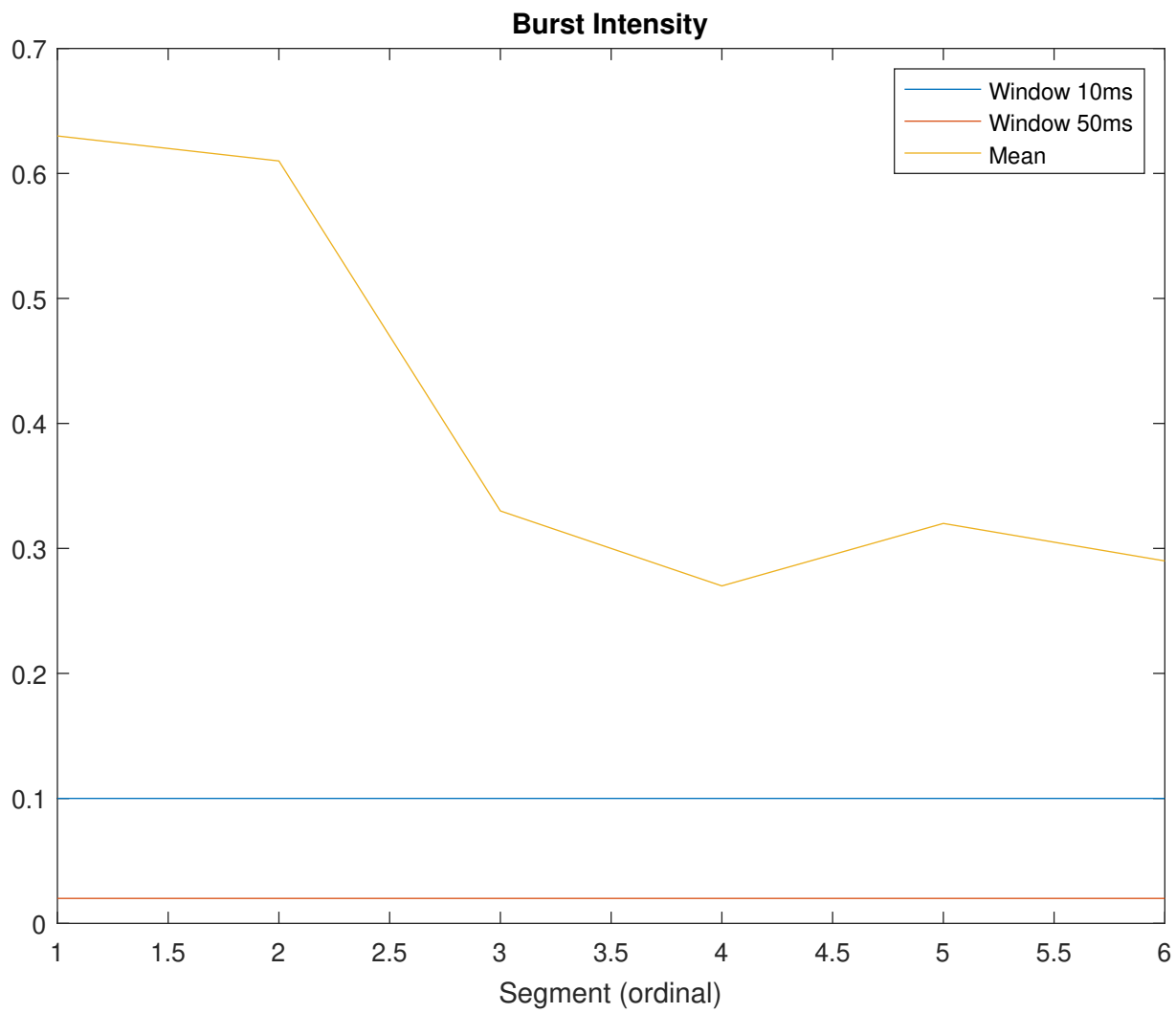


Autospectrum RRs





RRs		
N Spikes	3447	
Min & MAX ISI	539-39390	
Mean(X)	1043.28	
SD	905.69	
SE	15.43	
Gamma	1.0733	
CV	86.81	
Intervals < X	2037	
Intervals > X	1410	
Short/Long Interval Ratio	1.44	
Short Interval Intensity	2.2	
2nd Burst Time Window (ms)	10	50
Intervals < BTW	1	1
Intervals > BTW	3446	3446
Burst Duration	10	50
Burst Ratio	0	0
Burst Intensity	0.1	0.02



(1) data = 17.52%	Mean	
N Spikes	604	
Min & MAX ISI	687-28078	
Mean(X)	990.05	
SD	1263.75	
SE	51.42	
Gamma	0.88511	
CV	127.64	
Intervals < X	547	
Intervals > X	57	
Short/Long Interval Ratio	9.6	
Short Interval Intensity	0.63	0.63
2nd Burst Time Window (ms)	10	50
Intervals < BTW	1	1
Intervals > BTW	603	603
Burst Duration	10	50
Burst Ratio	0.002	0.002
Burst Intensity	0.1	0.02

(2) data = 17.44%	Mean	
N Spikes	601	
Min & MAX ISI	539-39390	
Mean(X)	996.61	
SD	1706.55	
SE	69.61	
Gamma	0.76419	
CV	171.24	
Intervals < X	522	
Intervals > X	79	
Short/Long Interval Ratio	6.61	
Short Interval Intensity	0.61	0.61
2nd Burst Time Window (ms)	10	50
Intervals < BTW	1	1
Intervals > BTW	600	600
Burst Duration	10	50
Burst Ratio	0.002	0.002
Burst Intensity	0.1	0.02

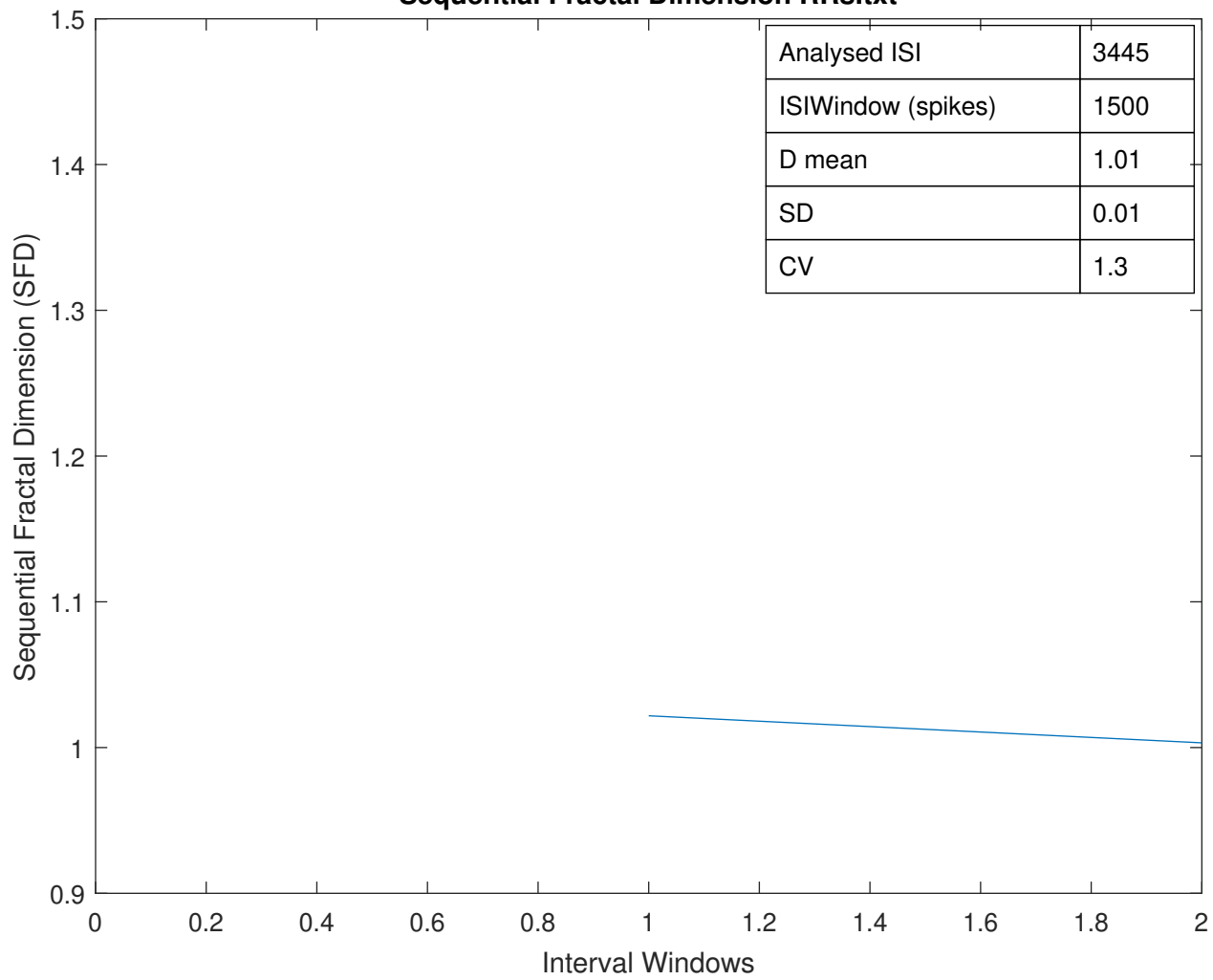
(3) data = 16.62%	Mean	
N Spikes	573	
Min & MAX ISI	750-6320	
Mean(X)	1046.56	
SD	238.06	
SE	9.95	
Gamma	2.0967	
CV	22.75	
Intervals < X	322	
Intervals > X	251	
Short/Long Interval Ratio	1.28	
Short Interval Intensity	0.33	0.33
2nd Burst Time Window (ms)	10	50
Intervals < BTW	1	1
Intervals > BTW	572	572
Burst Duration	10	50
Burst Ratio	0.002	0.002
Burst Intensity	0.1	0.02

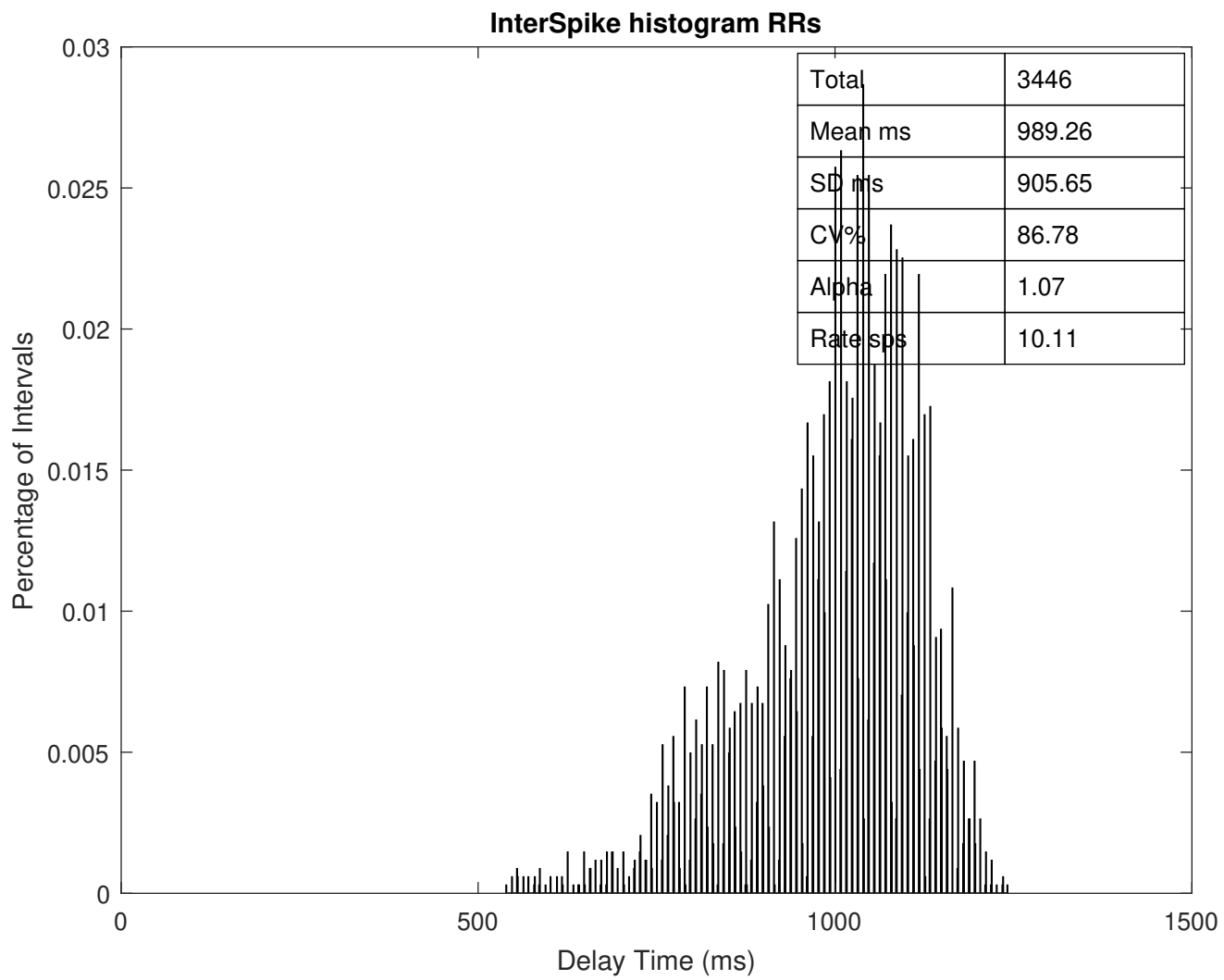
(4) data = 15.96%	Mean	
N Spikes	550	
Min & MAX ISI	907-5726	
Mean(X)	1090.79	
SD	215.29	
SE	9.18	
Gamma	2.2509	
CV	19.74	
Intervals < X	274	
Intervals > X	276	
Short/Long Interval Ratio	0.99	
Short Interval Intensity	0.27	0.27
2nd Burst Time Window (ms)	10	50
Intervals < BTW	1	1
Intervals > BTW	549	549
Burst Duration	10	50
Burst Ratio	0.002	0.002
Burst Intensity	0.1	0.02

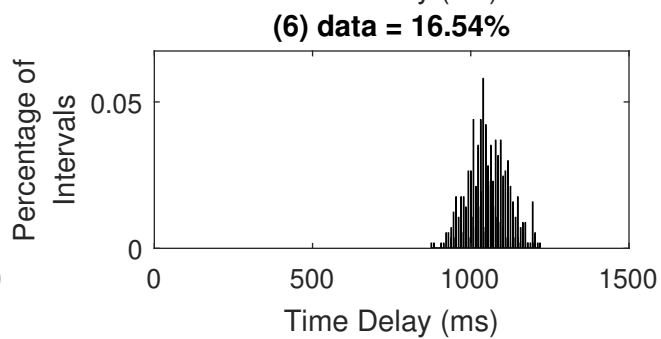
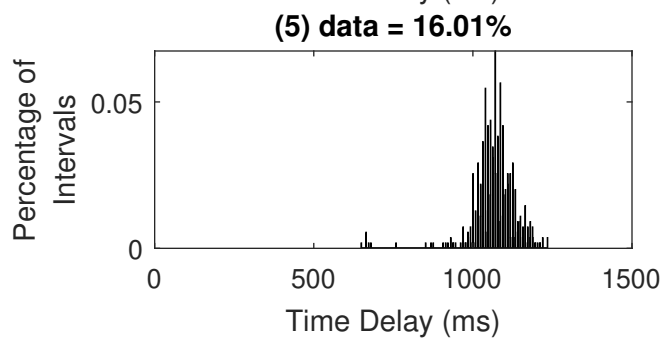
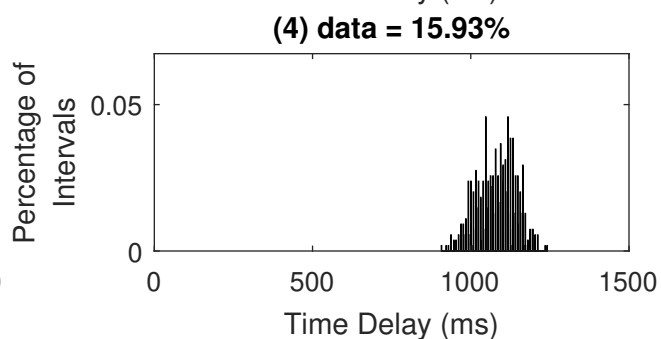
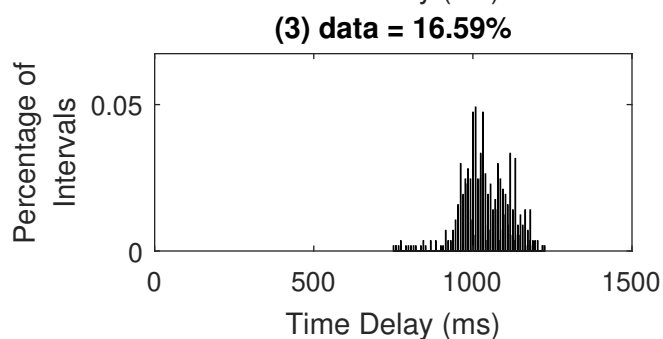
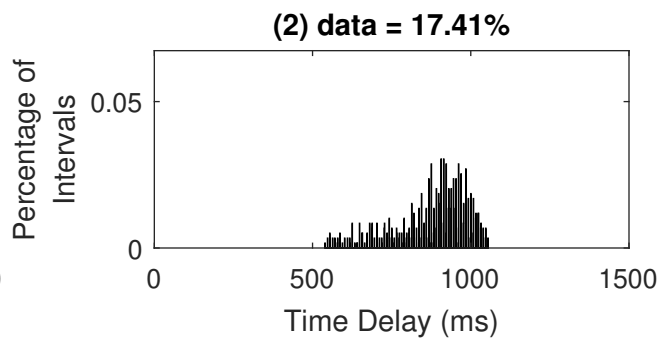
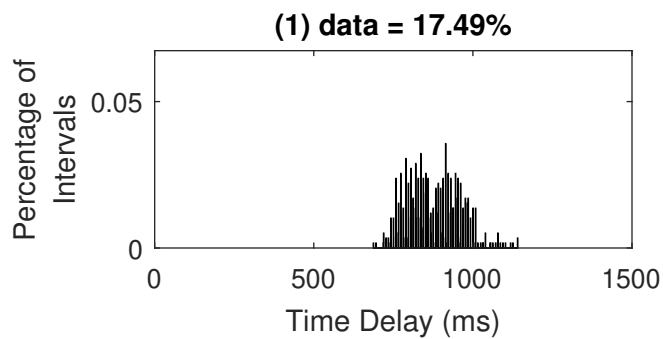
(5) data = 16.04%	Mean	
N Spikes	553	
Min & MAX ISI	649-6219	
Mean(X)	1083.52	
SD	316.8	
SE	13.47	
Gamma	1.8494	
CV	29.24	
Intervals < X	333	
Intervals > X	220	
Short/Long Interval Ratio	1.51	
Short Interval Intensity	0.32	0.32
2nd Burst Time Window (ms)	10	50
Intervals < BTW	1	1
Intervals > BTW	552	552
Burst Duration	10	50
Burst Ratio	0.002	0.002
Burst Intensity	0.1	0.02

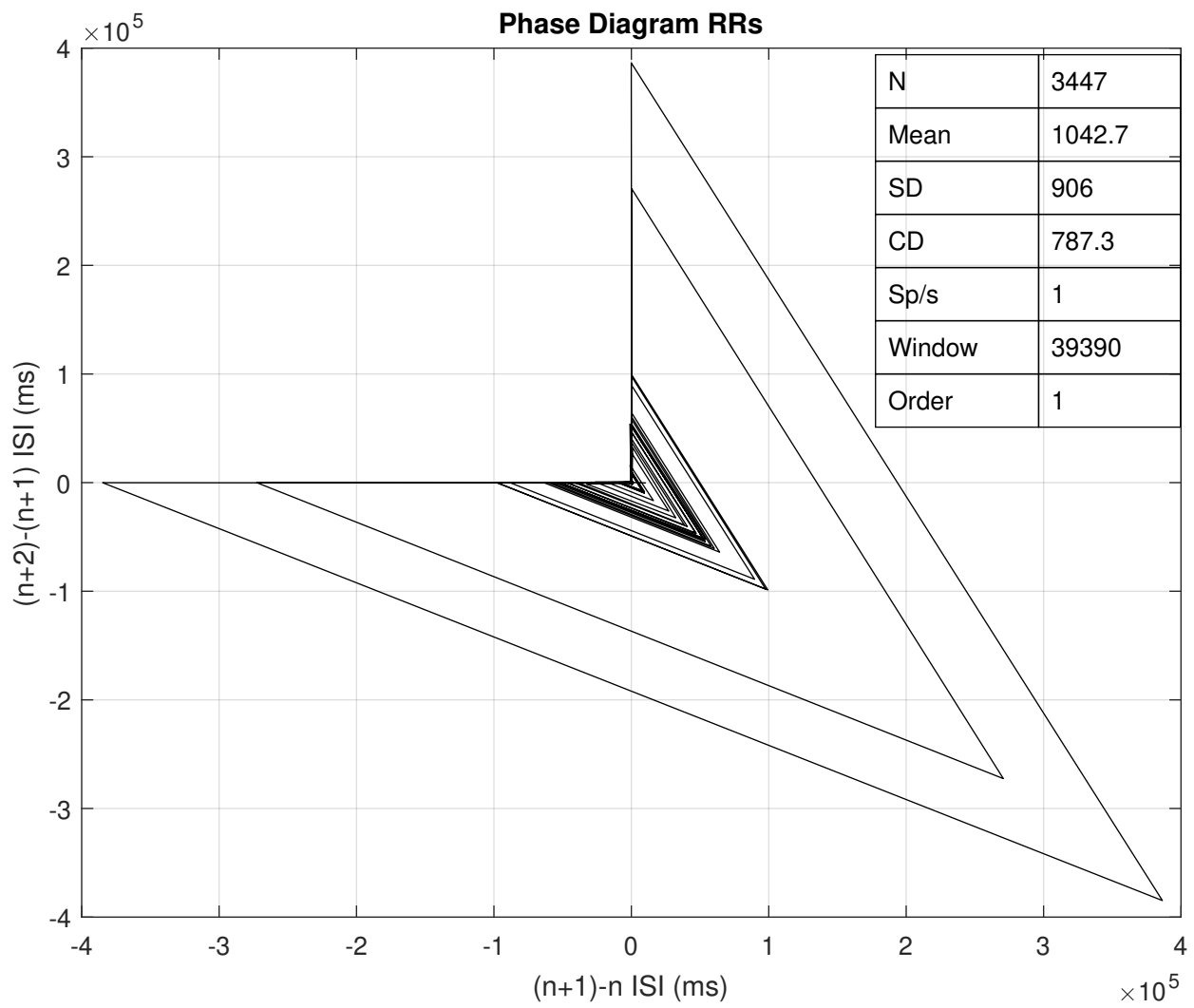
(6) data = 16.57%	Mean	
N Spikes	571	
Min & MAX ISI	875-1219	
Mean(X)	1051.57	
SD	75.24	
SE	3.15	
Gamma	3.7384	
CV	7.16	
Intervals < X	288	
Intervals > X	283	
Short/Long Interval Ratio	1.02	
Short Interval Intensity	0.29	0.29
2nd Burst Time Window (ms)	10	50
Intervals < BTW	1	1
Intervals > BTW	570	570
Burst Duration	10	50
Burst Ratio	0.002	0.002
Burst Intensity	0.1	0.02

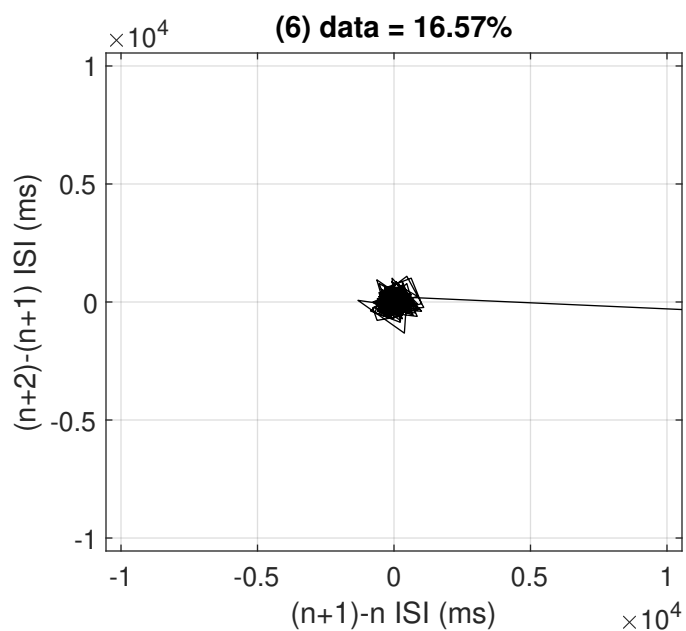
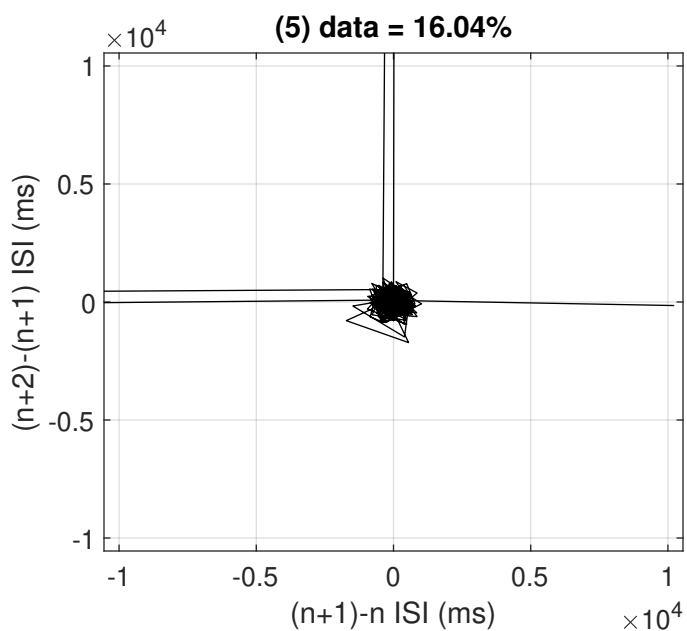
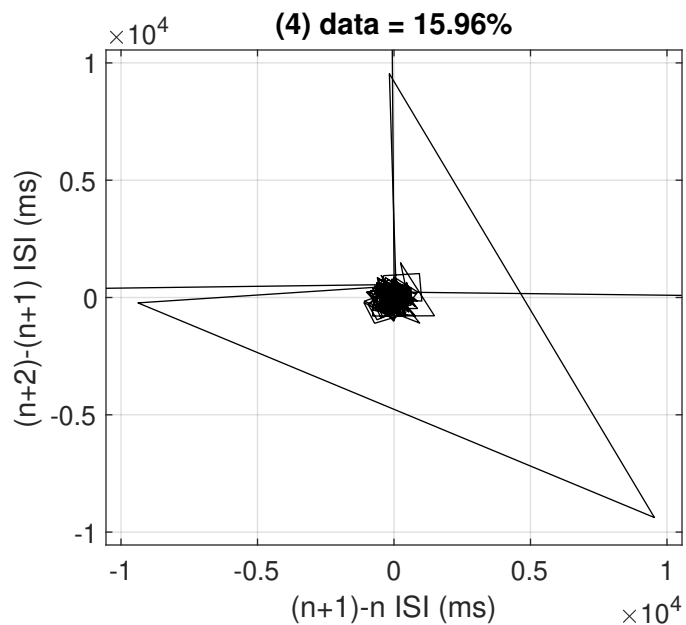
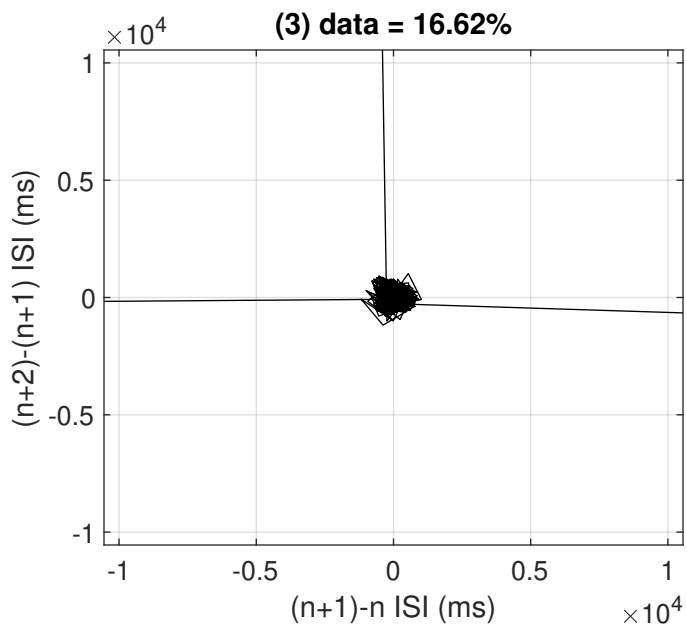
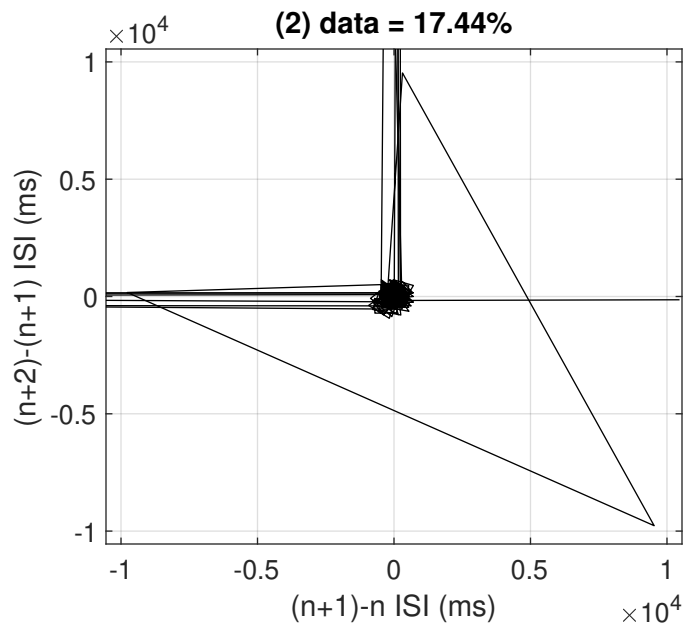
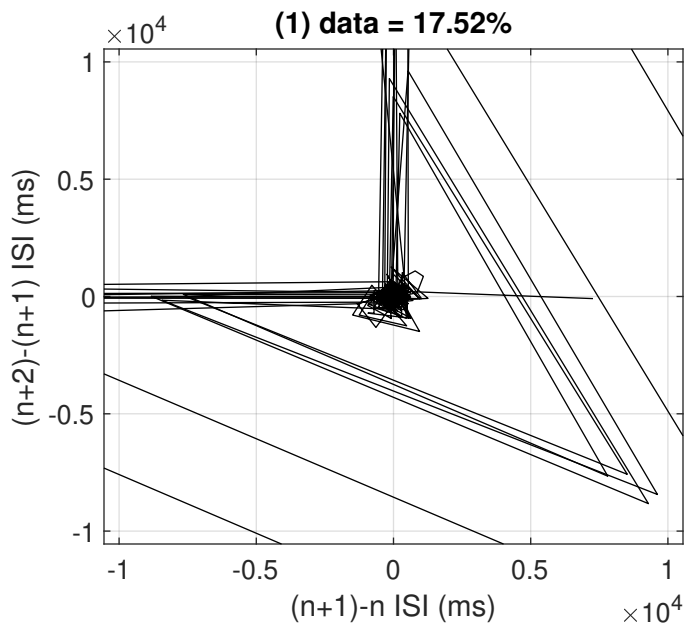
Sequential Fractal Dimension RRs.txt

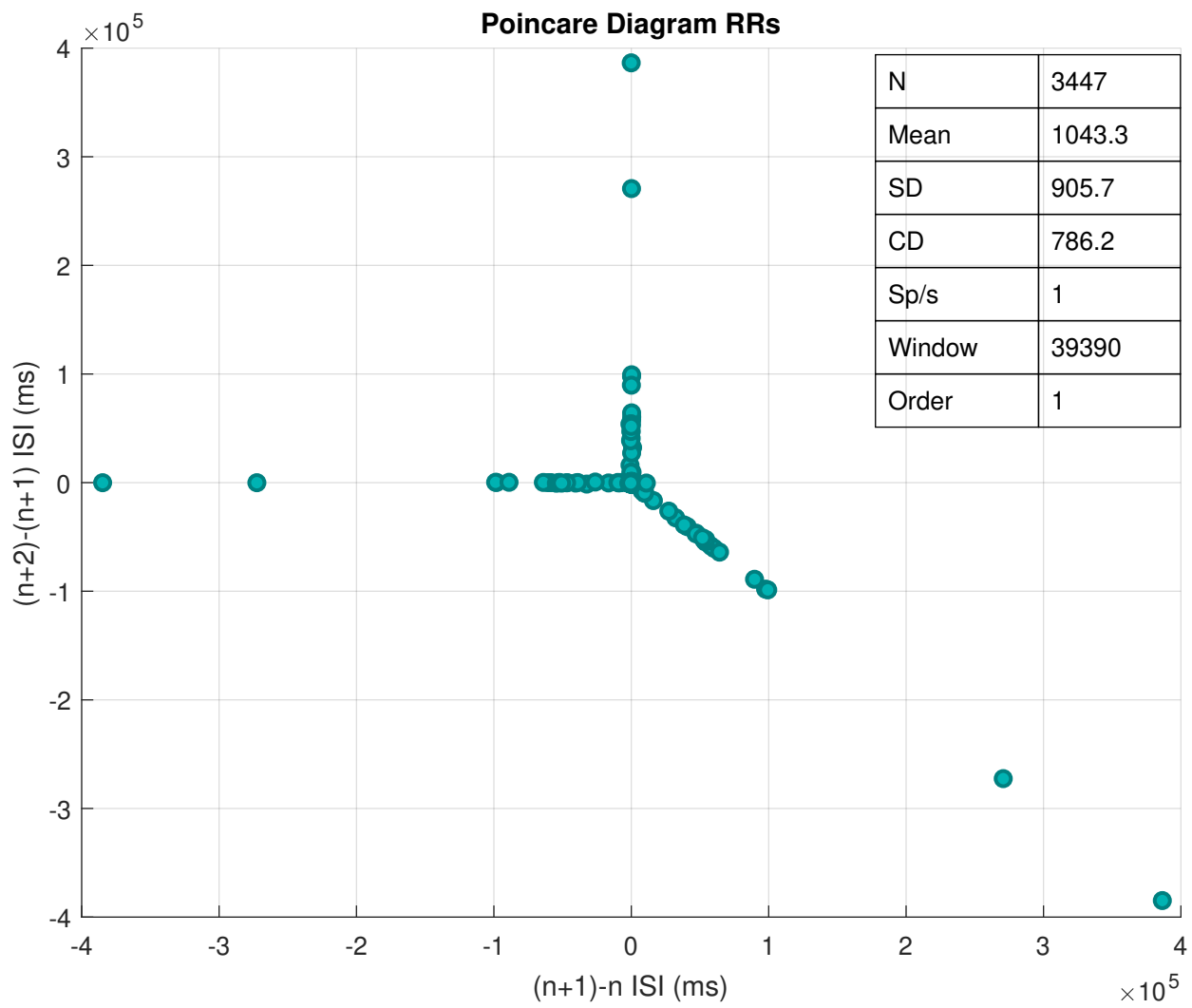


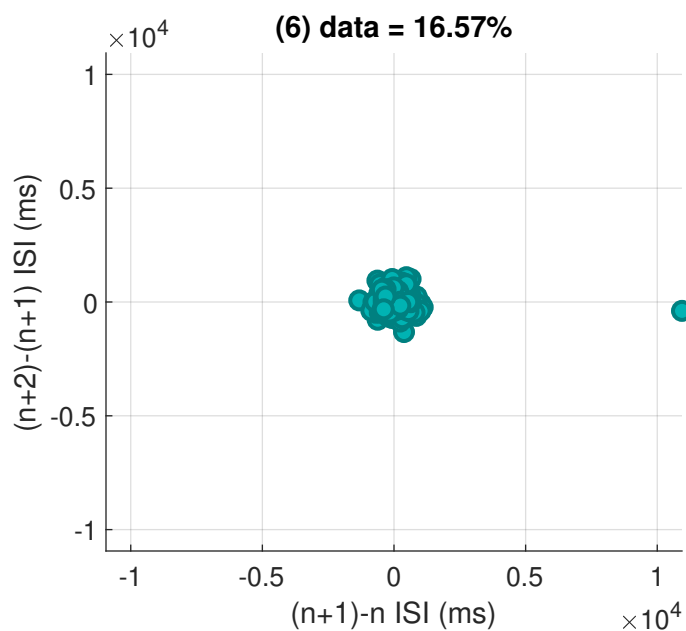
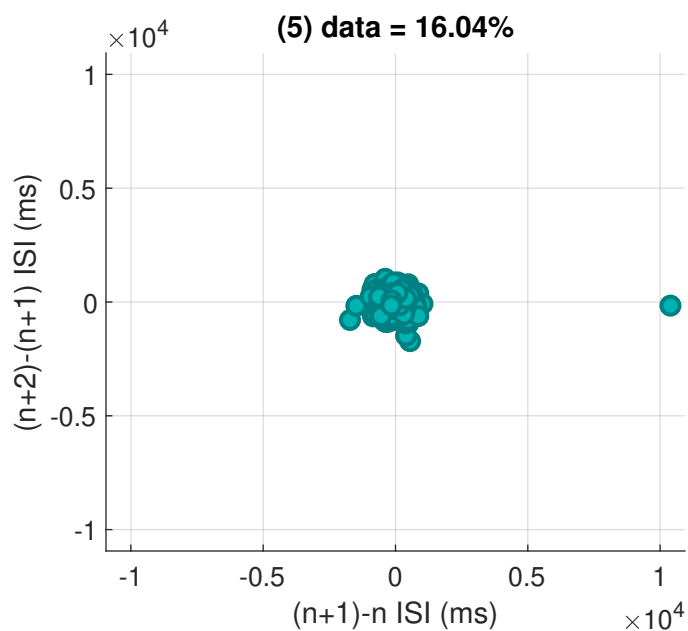
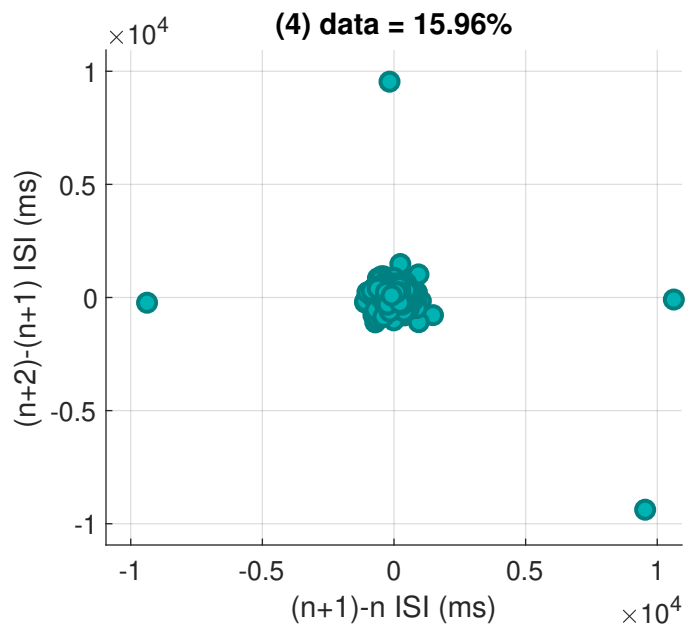
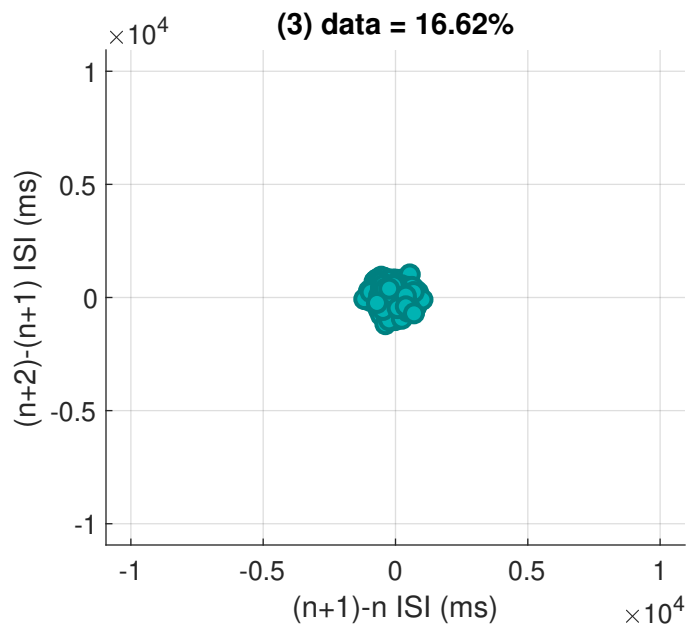
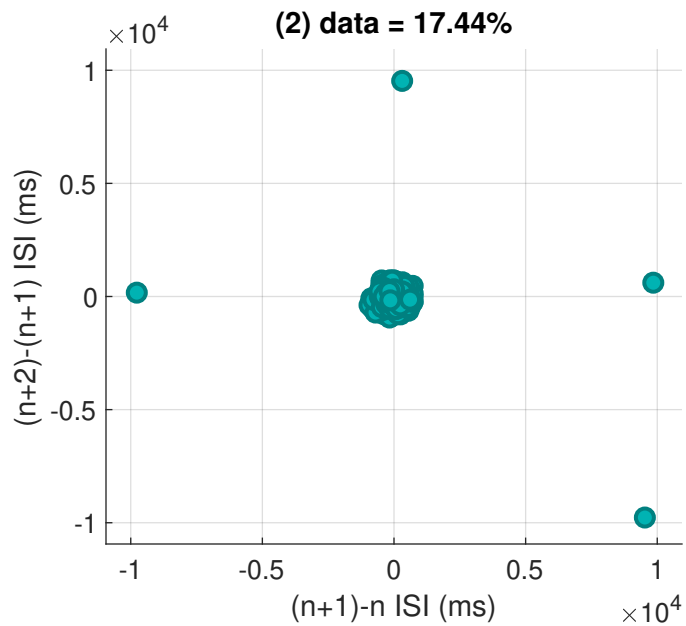
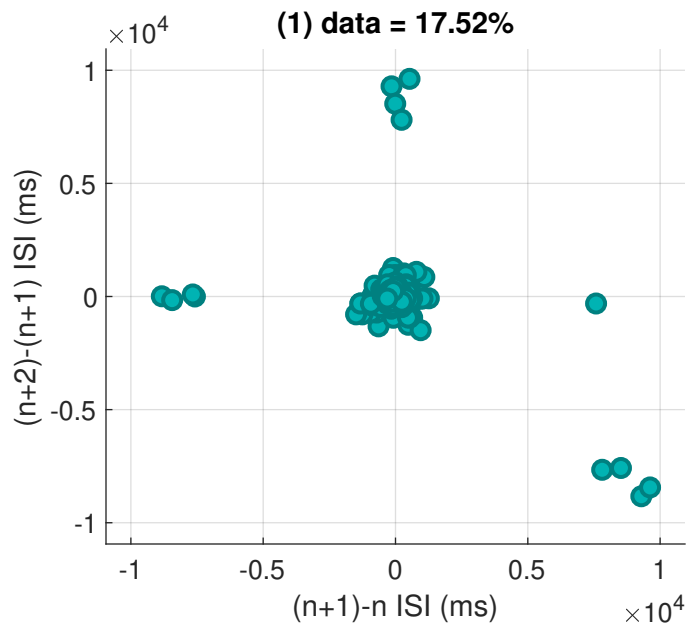












Raster plot RRs.txt

